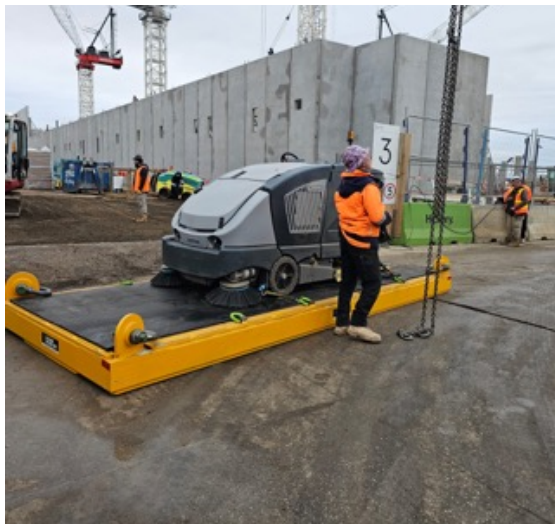


33t Flat rack - Test weight tray

Flat rack lifting trays are the ideal solution for lifting materials or machines that have no rated lifting points, loads can be secured with the four lashing points per side and a heavy 20mm rubber floor mat prevents any issues with slipping loads steel on steel. This tray is also ideal for stacking of steel test weights for overhead crane load testing to 33t.

We issue the tray with certificate of test & current NDT certification.



Case study

At a large construction site in Melbourne the client has a requirement to lift a 1.2t floor sweeper that had lifting points.

The sweeper need to be lifted by the tower crane into a basement level, after discussions with the client it was determined the flat rack was the ideal solution.



Specifications

- 4.9m x 2.0m (1.7m inside lifting points)
- 10mm steel floor
- Four lashing points per side
- 20mm rubber floor mat
- See drawings page 2

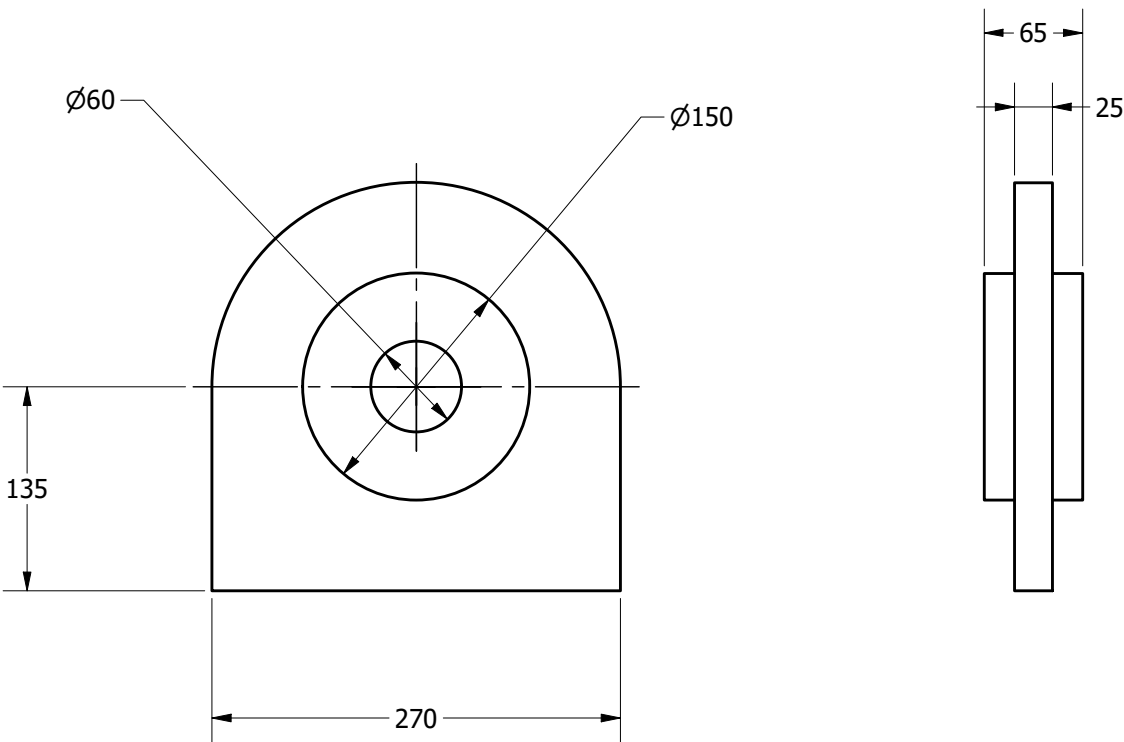
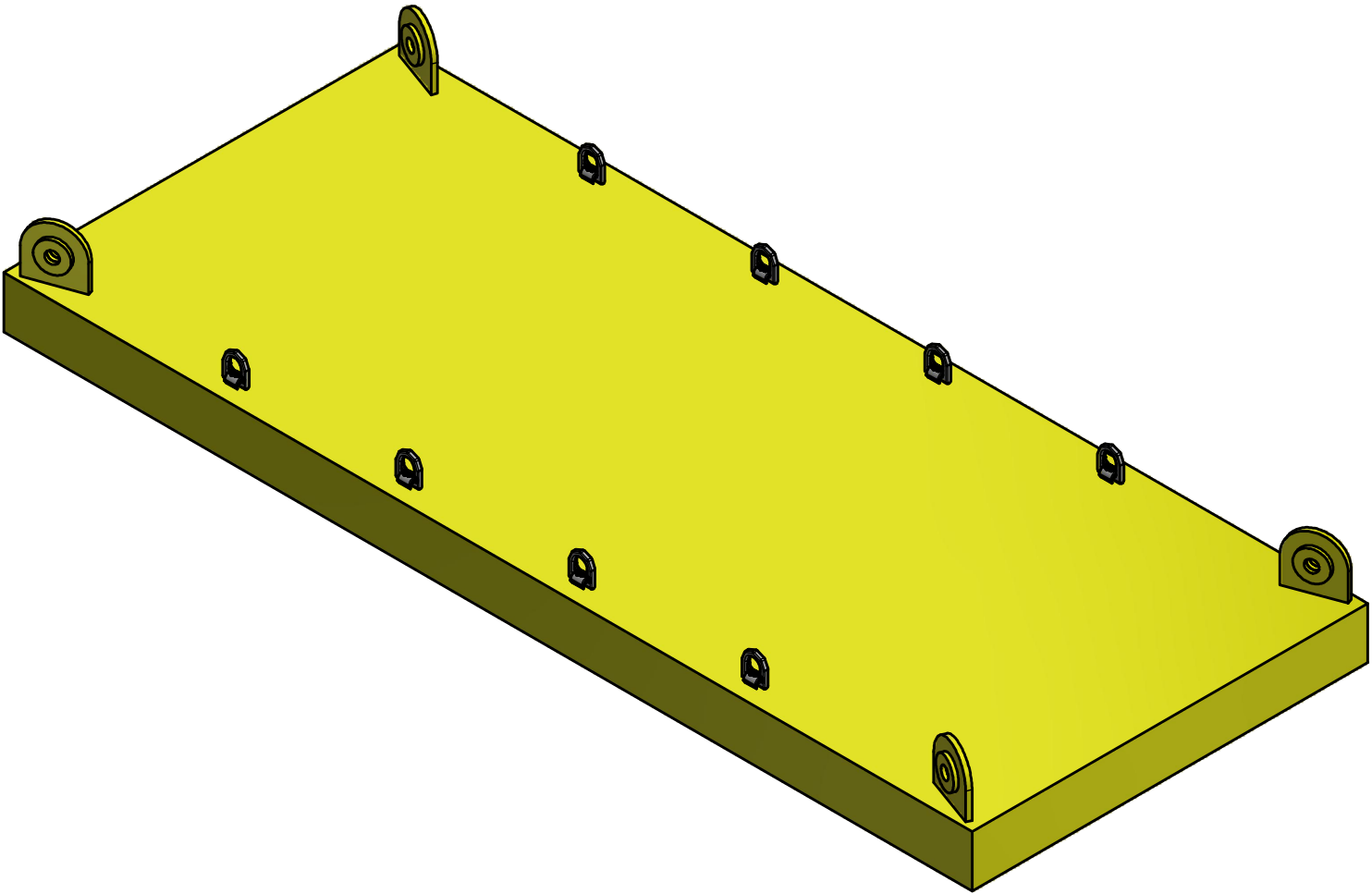
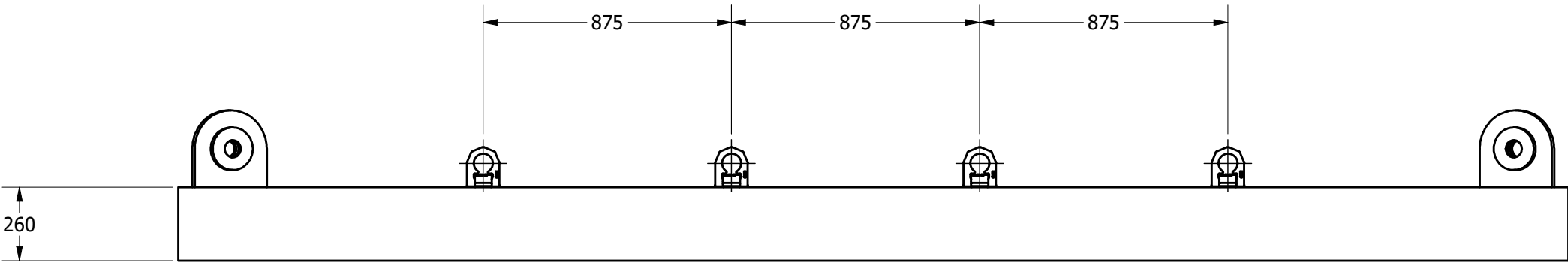
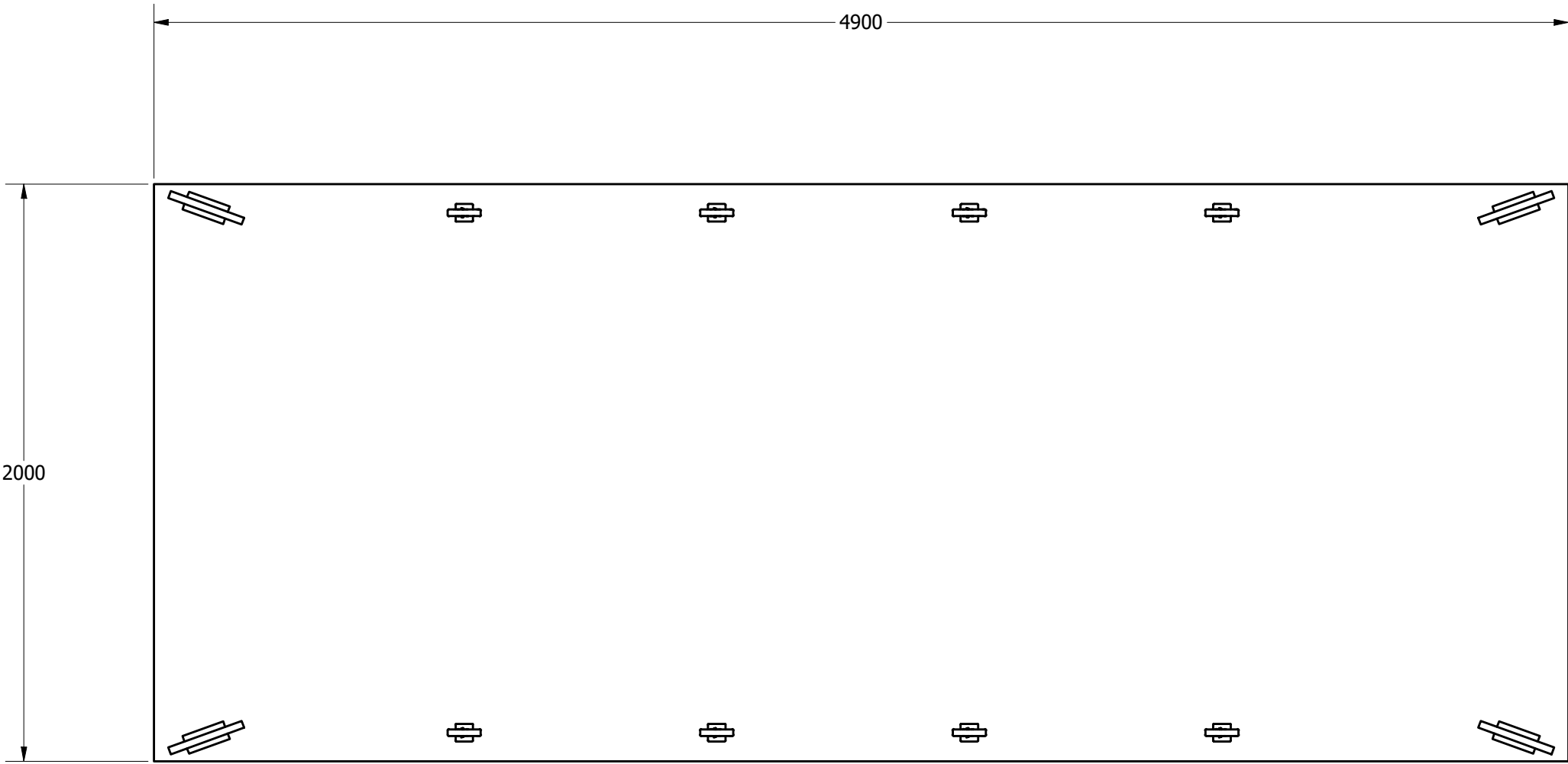
We can also supply a rated four leg chain set and/or a four point spreader beam if the lift design calls for vertical lifting legs to keep the rigging away from the load.

DO NOT SCALE - IF IN DOUBT ASK


33t* WLL TEST WEIGHT TRAY/FLAT RACK

*RATING IS BASED ON EVENLY DISTRIBUTED LOADING

*LASHING POINTS MUST BE USED TO SECURE LOAD



Lifting Gear Hire & Sales Pty Ltd
1/18 Redemptora Road
Henderson WA 6166
sales@liftinggearhire.com.au
www.liftinggearhire.com.au

| | | | | |
|---|--|--------------------|---|-----------------|
|  IDEAS CRANES T: +61 3 9763 4332 F: +61 3 9763 4321 WEB: www.ideascranes.com.au ABN: 41 104 067 987 | DRAWN: HT | DATE: 13/3/2025 | CLIENT: Dynamic Rigging Hire Pty Ltd | |
| | CHECKED: | DATE: | PROJECT: | |
| | CHECKED: | DATE: | TITLE: 33t LIFTING TRAY | |
| UNLESS OTHERWISE SPECIFIED DRAWING STANDARD: A.S.1100 ALL DIMENSIONS IN MM | THIS DRAWING & THE INFORMATION IT CONTAINS MUST NOT BE DUPLICATED WITHOUT PERMISSION OF IDEAS* PTY LTD. ALL COPIES MUST BE RETURNED UPON REQUEST | | SCALE: N.T.S | SHT SIZE: A2 |
| | DRAWING NUMBER: 241896-002 | | SHEET: 1 / 1 | REVISION: A |

| A | REV | DESCRIPTION | DATE | DRAWN | REVIEW |
|-----------|-----|-------------|------|-------|--------|
| REVISIONS | | | | | |